

ST-8311G/8326G/8342G

电子花样机

Direct Drive Programmable Electronic Pattern Sewer with Cylinder Bed



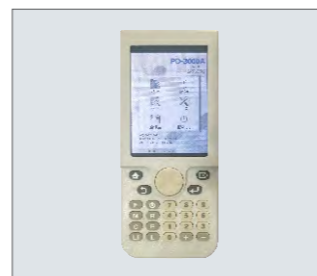
■ 完全按照缝制数据进行美观缝纫
Sewing data is sewn faithfully and attractively.



■ 通过操作盘可以简单调节各种参数
Different parameter can be adjusted easily from the operation panel



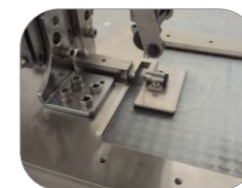
■ 使用简单程序编辑器(选购件)
Easy-to-use programmer (optional product)



规格参数 Specifications

型号 Model	ST-8311G	ST-8326G	ST-8342G
缝制范围(X*Y) Sewing area(X*Y)	最大130*100mm Max.130*100mm	最大200*100mm Max.200*100mm	最大300*200mm Max.300*200mm
使用缝纫机 Sewing machine	平缝花饰缝纫机 (2倍旋梭) Lock stitch pattern tacking machines		
线迹 Stitch form	单针平缝 Single needle lock stitch		
最大缝纫速度 Max.sewing speed	2,700 针/分钟 2,700 sti/min		
送布装置 Feed mechanism	间歇送布 (脉冲马达驱动) Intermittent feed (pulse motor drive)		
针距 Stitch length	0.05 - 12.7mm		
最大针数 Max.number of stitches	20,000 针/1个图案 20,000 stitches per pattern		
压脚驱动 Work clamp drive	脉冲马达驱动/气动驱动方式 Pulse motor drive/Pneumatic drive	气动驱动方式 Pulse motor drive	气动驱动方式 Pulse motor drive
压脚高度 Work clamp lift amount	脉冲马达驱动Pulse motor drive: 最高Max.25mm 气动驱动方式Pneumatic drive: 最高Max..30mm	最高.30mm Max.30mm	最高.30mm Max.30mm
压脚 work clamp	一体压脚:Unit work clamp 分离式压脚:Separate work clamp	一体压脚:Unit work clamp 分离式压脚:Separate work clamp	一体压脚:Unit work clamp
间歇压脚上升量 Height of stepping presser foot	22mm	19.5mm	22mm
间歇压脚行程 Stepping presser foot stroke	0或2-10mm (出厂设置 : 3mm) 2 - 4.5mm, 4.5 - 10mm or 0 (Factory setting :3 mm)		
旋梭 Hook	旋梭 (标准旋梭是选购件) Double-capacity shuttle hook (Standard capacity hook: Option)		
扫线装置 Thread wiper	标准装备 Standard equipment		
切线装置 Thread trimmer	标准装备 Standard equipment		
数据存储方式 Data storage media	闪存 (使用CF卡可任意缝制图案), 或者通过打板器使用USB Flash memory (Sewing patterns can be added using CF card), or USD trough LCD Programmer		
马达 Motor	AC伺服马达 550W AC servo motor 550W		
气压 Air pressure/consumption	0.5 Mpa 1.7L / min		

选购件 Option Device:



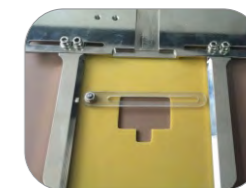
翻转压脚
Flip Flop for Label



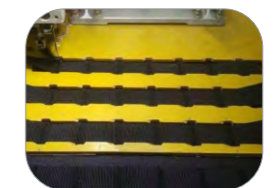
侧滑压脚
Sliding Presser for Label



简易贴袋
Patch Pocket



定制模板
Custom-made



定制模板
Custom-made